

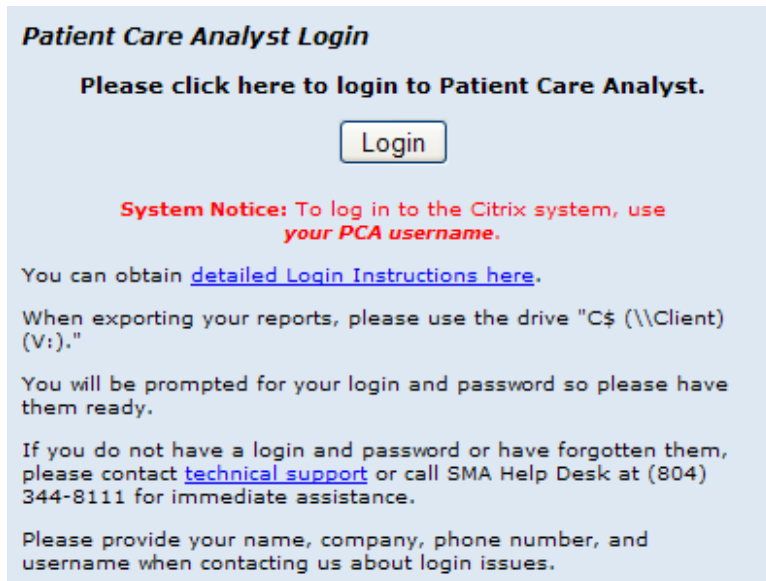
Patient Care Analyst (PCA) allows you to track the migration of patients in service areas, compare market share among competitors and perform DRG, ICD and CPT™ code analysis by payer, facility, physician, patient age group and ZIP code of origin.

These instructions will help you to log into the PCA system through our Citrix server.

1. Open your web browser and go to <http://www.patientcareanalyst.com/>
2. Click on the “PCA Login” menu item.



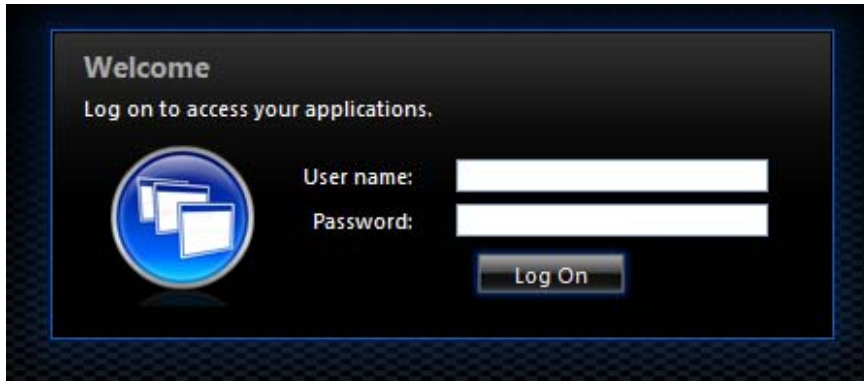
3. On the next page, click on the “Login” button.



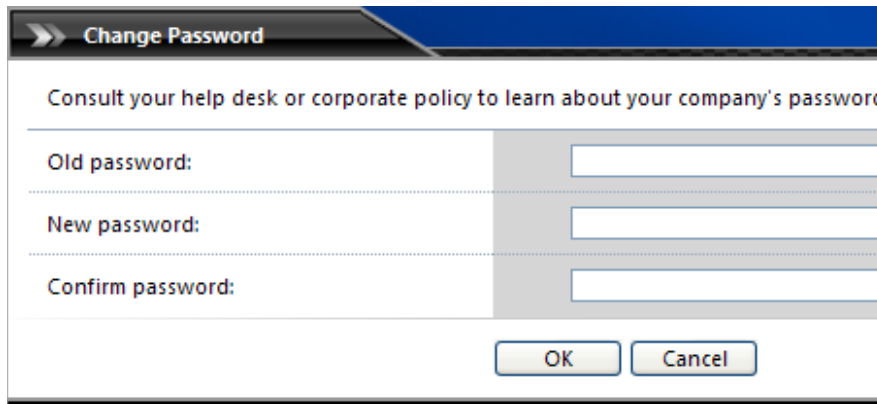
4. You may be required to accept an SLL Certificate which you should accept.

5. Enter your PCA username (your Tier 2 username) and Tier 1 password in the Citrix XenApp login window. If this is your first time logging in to the new system, you will have a temporary password. Call SMA Informatics at (804) 344-8111 for the password.

NOTE: DO NOT ADD @smainformatics.com TO YOUR THIS USERNAME!

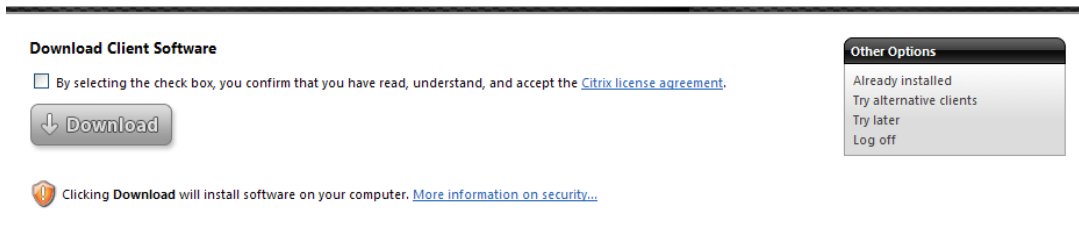


6. After you click “Log On” for the first time, you will be presented with the “Change Password Screen”:

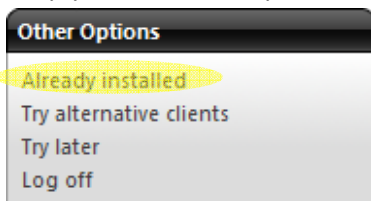


Enter your initial password which was emailed to you then fill in your new password and confirm it by typing your new password again.

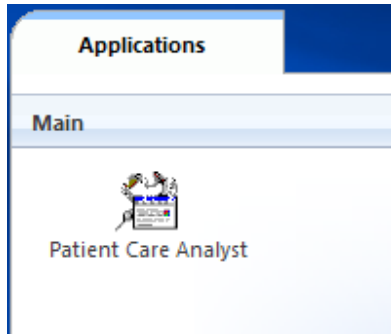
7. After you’ve changed your password, you will see the following screen:



If you already have the Citrix client installed (if you’ve used PCA before from this machine) simply click the first option on the right “Already Installed.”

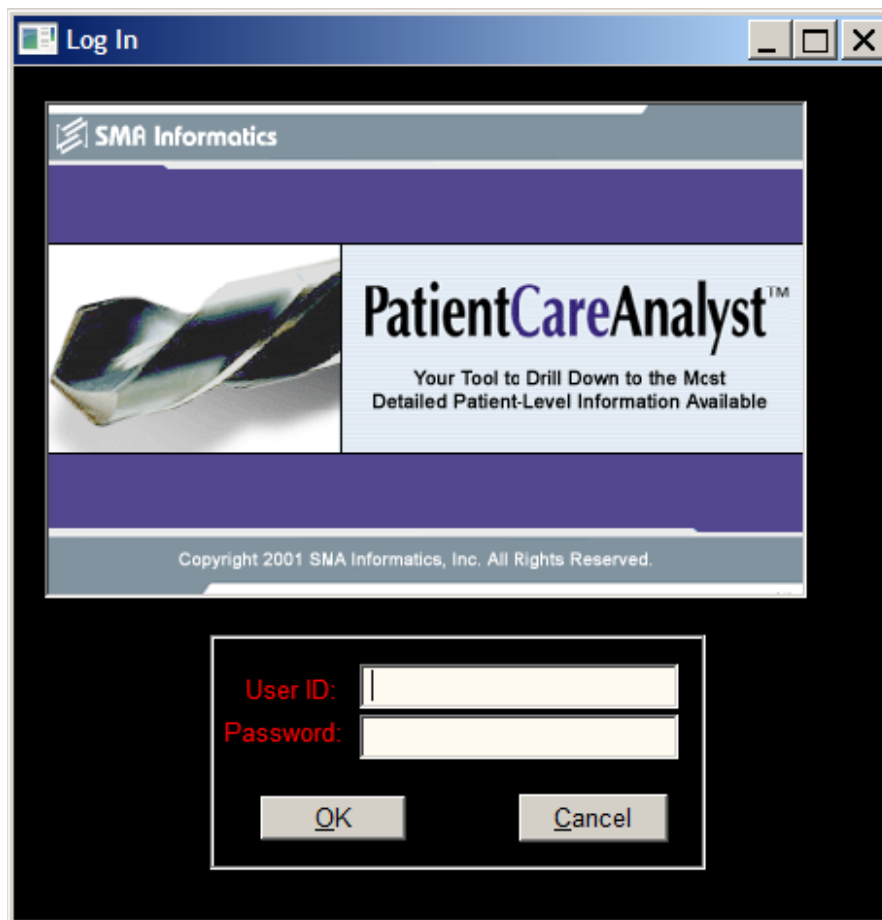


- You may also see a yellow-tan bar at the top of your screen if you are running Internet Explorer. It is asking you if you'd like to run the Citrix ICA Client Object from Citrix Systems, Inc. Left-click on that bar and select Run Add-on.
- You should now see your Applications WebTop which will have a PCA icon:




Click the PCA icon to open PCA and log in to the application.

- The login screen for PCA has not changed and if you are a client of SMA Informatics with a PCA subscription from before the upgrade to our system, your username and password is still the same as before.



- Enter your PCA username and Tier 2 password then click OK to start using PCA!

NOTE: There may be a warning box on your Applications WebTop about the trustworthiness of the Citrix server.

 Some of your published resources are available for reconnection; however, the current security configuration of your Web browser means that they cannot be reconnected. [Click here for assistance in resolving this issue](#)

This warning will not affect the security of your connection to the Patient Care Analyst application nor our server. If you click on the link in the warning, you can add our site to your trusted sites list, however, it would be best to speak with your IT department or System administrator concerning the addition of our site to the list of trusted sites for your browser.